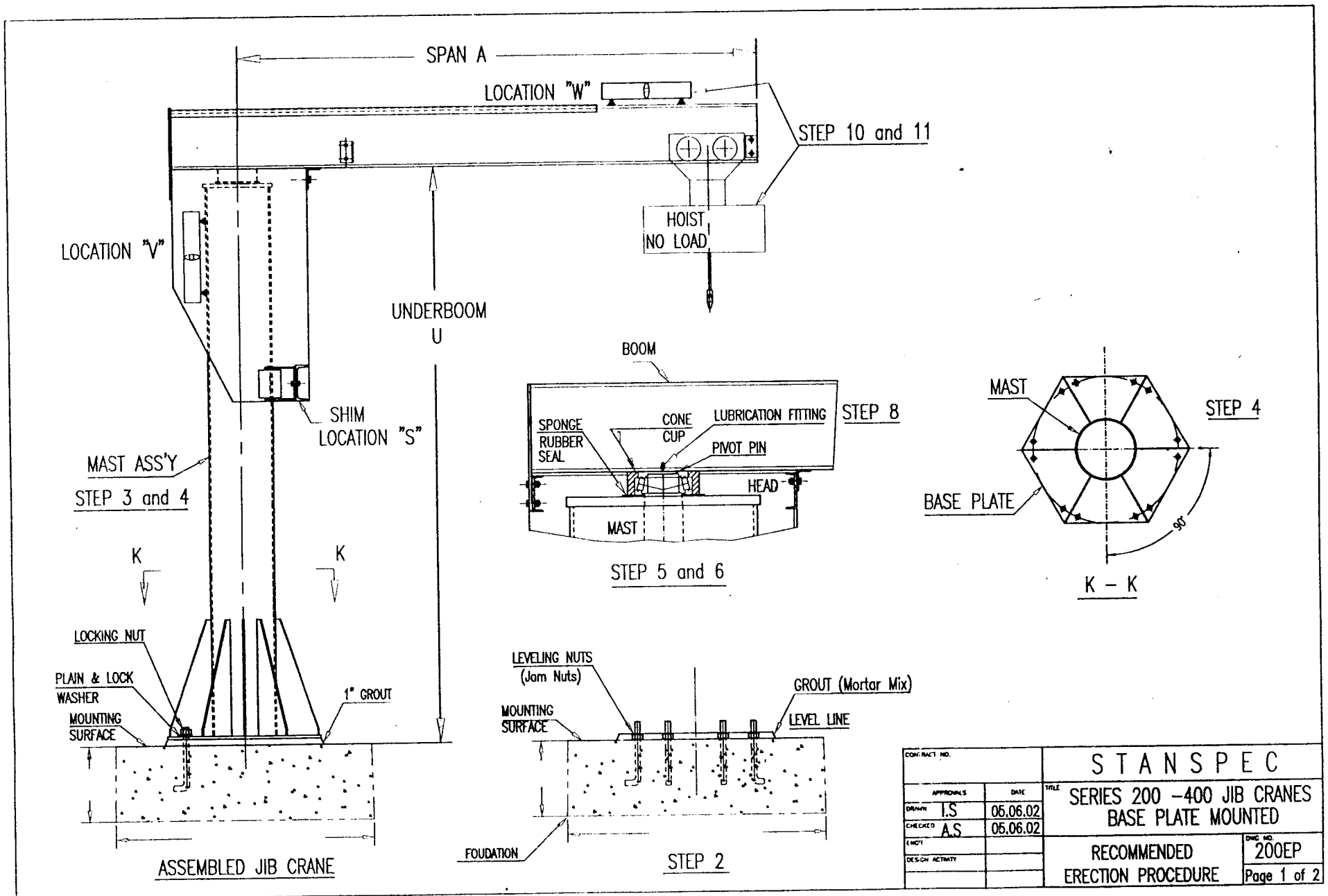


WITH LEVELING NUTS



CONTRACT NO.		STANSPEC	
APPROVALS	DATE	TITLE	SERIES 200 - 400 JIB CRANES BASE PLATE MOUNTED
DRAWN I.S.	05.06.02		
CHECKED A.S.	05.06.02		
DESIGN ACTIVITY			
RECOMMENDED ERECTION PROCEDURE			DWG NO. 200EP
			Page 1 of 2

INSTALLATION INSTRUCTIONS FOR BASE MOUNTED JIB CRANE MODEL 200-BPM

1. JIB CRANE IS SHIPPED IN 3 SECTIONS: HEAD - BOOM ASS'Y, MAST ASS'Y AND A BOX CONTAINING HOIST, CORD REEL, TOP BEARING AND ACCESSORIES.
2. AFTER FOUNDATION HAS HARDENED WITH ANCHOR BOLTS SET, INSTALL LEVELING NUTS (JAM NUTS) ON ANCHOR BOLTS OR USE LEVELING WEDGES (IF PREFERRED) AND LEVEL ACROSS NUTS, THEN FILL CENTER OF BOLT PATTERN TO TOP OF LEVELING NUTS WITH GROUT (MORTAR MIX).
3. SET MAST INTO POSITION ON LEVELING NUTS (WEDGES), INSTALL WASHERS AND LOCKING NUTS ON TOP OF ANCHOR BOLTS AND CRANE BASE PLATE.
PLEASE, PAY ATTENTION TO THE POSITION OF THE JUNCTION BOX ON THE MAST. BASE PLATE HAS TO BE ORIENTED ACCORDING TO THE DRAWING #25030-2 IN ORDER TO OBTAIN DESIRABLE CENTRAL POSITION OF THE BOOM.
WHEN BOOM IS IN ITS CENTRAL POSITION OF JUNCTION BOX ON THE CRANE HEAD HAS TO BE RIGHT ABOVE JUNCTION BOX ON THE MAST.
4. ALTERNATELY TIGHTEN THE ANCHOR BOLTS WHILE USING A PRECISION LEVEL AND CHECK PLUMB OF MAST ON 90° INCREMENTS AT LOCATION "V".
5. PLACE SPONGE RUBBER SEAL AND ROTATION TIMKEN BEARING CONE ON THE TOP BEARING BOSS - PIVOT PIN.
6. TIMKEN BEARING CUP FURNISHED PRESSED INTO BEARING HOUSING ON BOTTOM OF BOOM. CHECK TO MAKE SURE THAT BEARING CUP IS IN PLACE.
7. RAISE ASSEMBLED HEAD AND BOOM ONTO PLUMBED MAST.
8. AFTER HEAD AND BOOM IS MOUNTED ONTO MAST LUBRICATE TOP PIVOT PIN BEARING THRU GREASE FITTING (BOTTOM ROLLER ASS'Y FACTORY LUBRICATED).
9. ROTATE BOOM SLOWLY THRU ARC OF ~360° TO BE SURE THAT ROTATION IS SATISFACTORY. IF EQUIPPED WITH ROTATION STOPS LOCATE ROTATION STOPS AND ROTATE THRU LIMITS OF ROTATION IN BOTH DIRECTIONS.
10. WHEN GROUT IS FULLY CURED, REMOVE END STOP ON THE BOOM AND MOUNT HOIST AND TROLLEY ON JIB BOOM. CHECK GAUGE OF TROLLEY WHEELS FOR PROPER FIT ON BEAM. REPLACE END STOP.
11. CORD REEL IS ELECTRICALLY CONNECTED TO THE HOIST AT OUR FACTORY.
DO NOT DISCONNECT IT WHEN INSTALLING HOIST ON THE BOOM. HANDLE CORD REEL ACCORDINGLY. INSTALL CORD REEL ON THE CHANNEL BRACKET WELDED TO THE BOOM. THREAD CORD REEL POWER SUPPLY CABLE THROUGH THE HOLE IN THE BRACKET AND AROUND A FLAT BAR AT ITS BOTTOM.
12. WITH HOIST AND TROLLEY POSITIONED AT END OF BOOM WITHOUT LIVE LOAD, CHECK BOOM AT LOCATION "W" FOR LEVEL. IF BOOM REQUIRES LEVELING, LOOSEN THE TWO (2) HEX HEAD BOLTS AT LOCATION "S" AND INSERT NECESSARY SHIMS BETWEEN LOWER ROLLER FRAME ASSEMBLY AND THE HEAD FRAME. AFTER LEVELING THE BOOM, TIGHTEN THE TWO (2) HEX HEAD BOLTS.
13. MAKE ALL NECESSARY ELECTRICAL CONNECTIONS:
 - a) CONNECT CORD REEL POWER SUPPLY CABLE TO THE CABLE COMING OUT OF THE JUNCTION BOX ON THE MAST. USE CONNECTORS AND WIRE NUTS PROVIDED.
 - b) BRING EXTERNAL POWER SUPPLY LINE TO THE JUNCTION BOX ON THE MAST AND CONNECT WITH THE CABLE PROVIDED. ADDITIONAL CONNECTOR IS REQUIRED.
14. AFTER JIB CRANE IS OPERATING SATISFACTORY SET FINAL GROUT UNDER BASE PLATE AND LET HARDEN BEFORE MAKING A LOAD TEST AND PUTTING JIB CRANE INTO SERVICE.
15. JIB CRANE FOUNDATION REQUIREMENTS ARE BASED ON A SOIL PRESSURE OF 2500# PER SQUARE FOOT.
CONCRETE RECOMMENDED FOR JIB CRANE FOUNDATION IS 3000# PER SQUARE INCH OF COMPRESSIVE CONCRETE.
16. FOUNDATIONS SHOULD BE REINFORCED WITH 5/8" DIA STEEL REINFORCING RODS ON APPROXIMATELY 12" CENTERS RUNNING CRISS CROSS BOTH DIRECTIONS OF FOUNDATION.

MANUFACTURER DISCLAIMER

ANY CHANGE OR MODIFICATION IN FOUNDATION DESIGN OR DIMENSIONS SHALL BE CERTIFIED AND PERFORMED BY QUALIFIED PEOPLE.

ANY CHANGE OR MODIFICATION NOT CONSISTENT WITH THE AFOREMENTIONED PARAMETERS AND ENCLOSED DRAWING IS EXPRESSLY PROHIBITED AND CONSTITUTES PURCHASERS AGREEMENT TO INDEMNIFY AND HOLD HARMLESS THE MANUFACTURER FROM ANY AND ALL CLAIMS ARISING OUT OF SUCH USE.

WARNING

THIS EQUIPMENT IS NOT DESIGNED FOR AND SHOULD NOT BE USED FOR LIFTING, SUPPORTING OR TRANSPORTING PERSONNEL.